

Schindler 2400/2500/2600

Planning data according to EN81-20



Planning Data

As of 1st September 2017 all installed elevators must comply with EN81-20. Please contact us for any further questions.

Drive	Load capacity		Speed		Travel height max.		Number of stops max.		Nominal rating		Nominal current			Car			Door			Shaft	
	GQ kg	Passengers max.	VKN m/s	HQ ²⁾ m	ZE	PMN ³⁾ kW	INN ³⁾ A	BK ⁴⁾ mm	TK ⁴⁾ mm	HK ⁴⁾ mm	Type	BT ⁵⁾ mm	HT ⁵⁾ mm	HSG mm	HSK mm						
Traction ¹⁾	1000	13	1.0	50	21	10.8	23	1000–1600	1400–2300	2100–2500	T2/C2/C4	900–1600	2000–2400	1500	HK + 1700						
			1.6	65		18.9	30							1700	HK + 1900						
	1275	17	1.0	50	21	10.8	29	1100–1800	1500–2600	2100–2500	T2/C2/C4	900–1800	2000–2400	1500	HK + 1700						
			1.6	65		18.9	36							1700	HK + 1900						
	1600	21	1.0	50	21	10.8	30	1200–2100	1500–2900	2100–2500	T2/C2/C4	900–2100	2000–2400	1500	HK + 1700						
			1.6	65		22.8	43							1700	HK + 1900						
	2000	26	1.0	50	21	14.2	37	1400–2300	1650–2900	2100–2500	T2/C2/C4/C6	900–2300	2000–2400	1500	HK + 1700						
			1.6	50		22.8	49							1700	HK + 1900						
	2500	33	1.0	50	21	25.0	43	1400–2300	2050–3500	2100–2500	T2/C2/C4/C6	900–2300	2000–2400	1600	HK + 1700						
	3000	39	1.0	24	21	25.0	49	1500–2300	2350–3800	2100–2500	C2/C4/C6	1000–2300	2000–2400	1600	HK + 1700						
	3200	42	1.0	24	21	25.0	49	1700–2400	2350–3500	2100–2500	C2/C4/C6	1200–2400	2000–2400	1600	HK + 1700						
	3500	46	1.0	24	21	25.0	53	1800–2400	2550–3600	2100–2500	C4/C6	1400–2400	2000–2400	1600	HK + 1700						
	4000	53	0.8	24	21	22.8	53	1800–2500	2800–4000	2100–2500	C4/C6	1400–2500	2000–2400	1600	HK + 1700						

GQ Load capacity
VKN Speed
HQ Travel height
ZE Number of stops
PMN Nominal rating
INN Nominal current

¹⁾ With or without machine room
²⁾ Higher travel heights up to 50 meters on request
³⁾ Maximum values

BK Car width
TK Car depth
HK Car height

⁴⁾ Car dimensions in 50 mm increments, the maximum allowed car area according to EN81 must be considered

T2 Telescopic door, two-part
C2 Center-opening telescopic door (two-part)
C4 Center-opening telescopic door (four-part)
C6 Center-opening telescopic door (six-part)
BT Door width
HT Door height

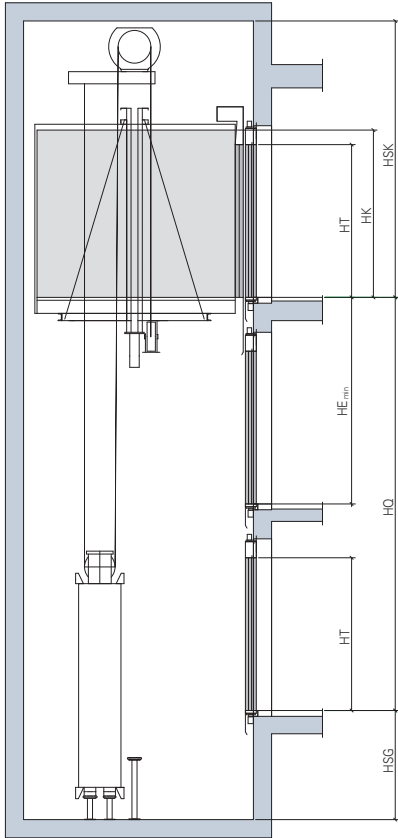
⁵⁾ Door dimensions in 100 mm increments

HSG Shaft pit depth
HSK Clear overhead below lifting beam

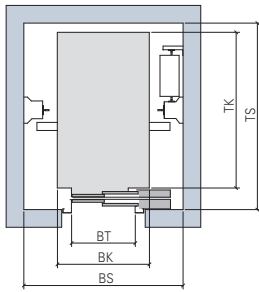
Max. number of entrances: 2, opposing
Number of rides (rope): 180 per hour
Power supply: 400 V; optional 230 V

Schindler 2400 and 2500 elevators are not designed for trolleys with heavy loads.

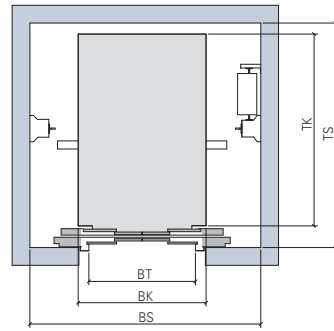
Height and plan view



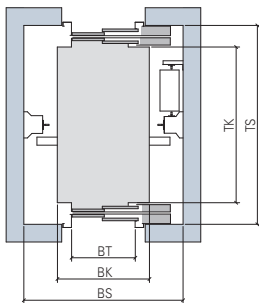
One-sided entrance



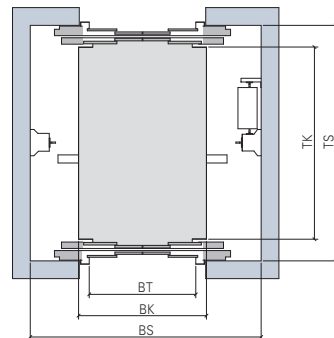
One-sided entrance
Telescopic door



One-sided entrance
Center-opening telescopic door (four-part)



Two-sided entrance
Telescopic door



Two-sided entrance
Center-opening telescopic door (four-part)

When vision meets discipline. Schindler partners with Solar Impulse.



Schindler is a main partner of **Solar Impulse**, the zero fuel airplane aiming to fly around the world propelled only by solar energy.



Find more information on
Schindler products.

Just scan the code with your mobile phone,
using free QR code scanner software.
This is either pre-installed on your phone or
easily downloadable for free.